

# *Birthday Bash Stamp Camp- February 2021*

## *Helpful Measurements*

### 1. **Stand-up/Trophy Card-**

Cut cardstock to 4 ¼ x 11.

With 11" side at the top, score at 1, 2 ¾, 3 ¾, 5 ½, 7 ¼, 8 ¼, and 10.

On the 5 ½" score line, cut vertically from ½" to 3 ¾" to make the slit.

For the pull up piece, the WW was 2 ¾ x 5 ¼. The Layer behind is 3 x 5 ½.

### 2. **Calendar-**

Cardstock is 4 ¼ x 11 folded in half.

The stand is 4x4 scored at ½, 2, and 3 ½.

### 3. **Double Z Fold Card-**

Base is 4 ¼ x 11 scored at 2 ¾ and 5 ½.

Z piece for the middle (old olive) is 3 ¼ x 8 ¼ scored at 2 ¾ and 5 ½.

### 4. **Gift Bag and Card from 2 pieces of DSP!-**

Find the top of the first piece of DSP and score that side at 1". Score the other 3 sides around at 3".

On the second piece, with the top of the design at the top, cut off a 4 inch strip and set this aside.

Score the top of the remaining piece at 1" also. Then score each of the sides at 1" and the bottom at 3".

Cut up the score lines from the bottom just to the score line at 3". Fold in the outer tabs and glue to form the two halves of the bag. Insert the smaller into the larger and glue together to form your bag.

**-For the Card-** Take the 4x12 strip and cut it to 10 ½ x 4 and fold in half for the card. Save the 1 ½" piece for the card front.

Cut a coordinating piece of cardstock to 5 ½ x 4 ¼ for the base of the card. You can also add a piece that is 4 x 1 ¾ for the layer behind your 1 ½" DSP piece on the card front.

Cut a piece for the hanger at 2 ¼ x 5 ½ and use the Classic Label punch to make the slit. Remember to only glue the top for hanging the card.

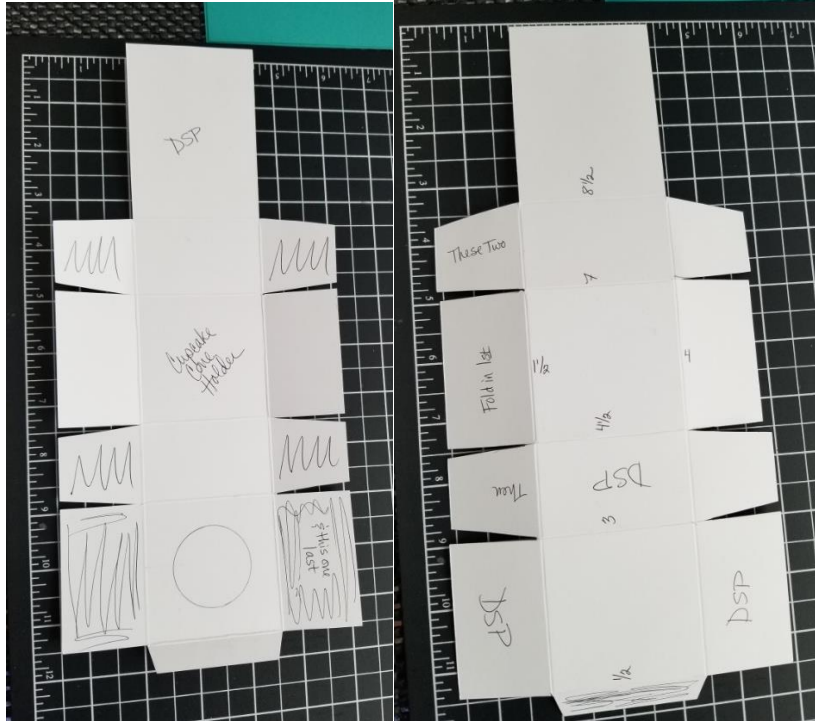
## 5. Ice Cream Cone Holder-

Cut cardstock to 12 x 5 1/2".

With 12" at the top, score at 1/2, 3, 4 1/2, 7, and 8 1/2.

With 5 1/2" at the top, score at 1 1/2 and 4.

Use 1 1/2" circle punch for the hole.



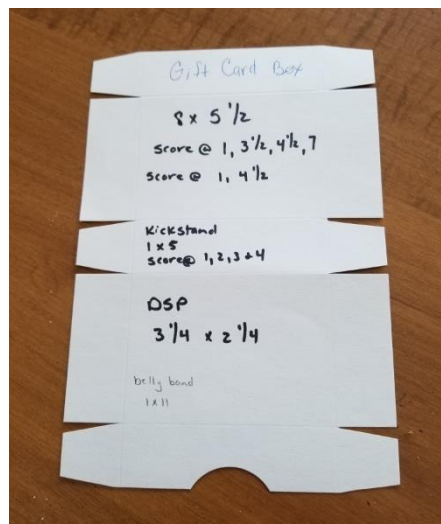
## 6. Gift Card Box-

Cut Cardstock to 8 x 5 1/2. Cut another strip that is 1 x 5.

With 8" side at the top, score at 1, 3 1/2, 4 1/2, and 7.

With 5 1/2" side at the top, score at 1 and 4 1/2.

Score 1 x 5 piece at 1, 2, 3, and 4. Fold up to make cube stand for inside box.



## 7. Slider Lock Card-

This card is complicated and it is easier to watch the video tutorial here-

[https://www.youtube.com/watch?v=UiW\\_d3r8oBo](https://www.youtube.com/watch?v=UiW_d3r8oBo)

Or do a search for “Sliding Lock Card by Buckeye Inklings”.

## 8. Note Card Box-

Cut cardstock to  $7\frac{3}{4} \times 10\frac{1}{4}$ .

With  $7\frac{3}{4}$  side at the top, score at 1, 2,  $5\frac{3}{4}$ , and  $6\frac{3}{4}$ .

With  $10\frac{1}{4}$  side at the top, score at 2, 3,  $8\frac{1}{4}$ , and  $9\frac{1}{4}$ .



## **BONUS!!!**

Here are the directions for making the same type of box except it will hold full size cards and envelopes!

You will use a full sheet of cardstock.

With 11” side at the top, score at 2, 3, 9, and 10.

With the  $8\frac{1}{2}$ ” side at the top, score at 1, 2,  $6\frac{1}{2}$ , and  $7\frac{1}{2}$ .

Cut and assemble according to the photo above and voila!

*Happy Crafting-  
Jane and Charity*